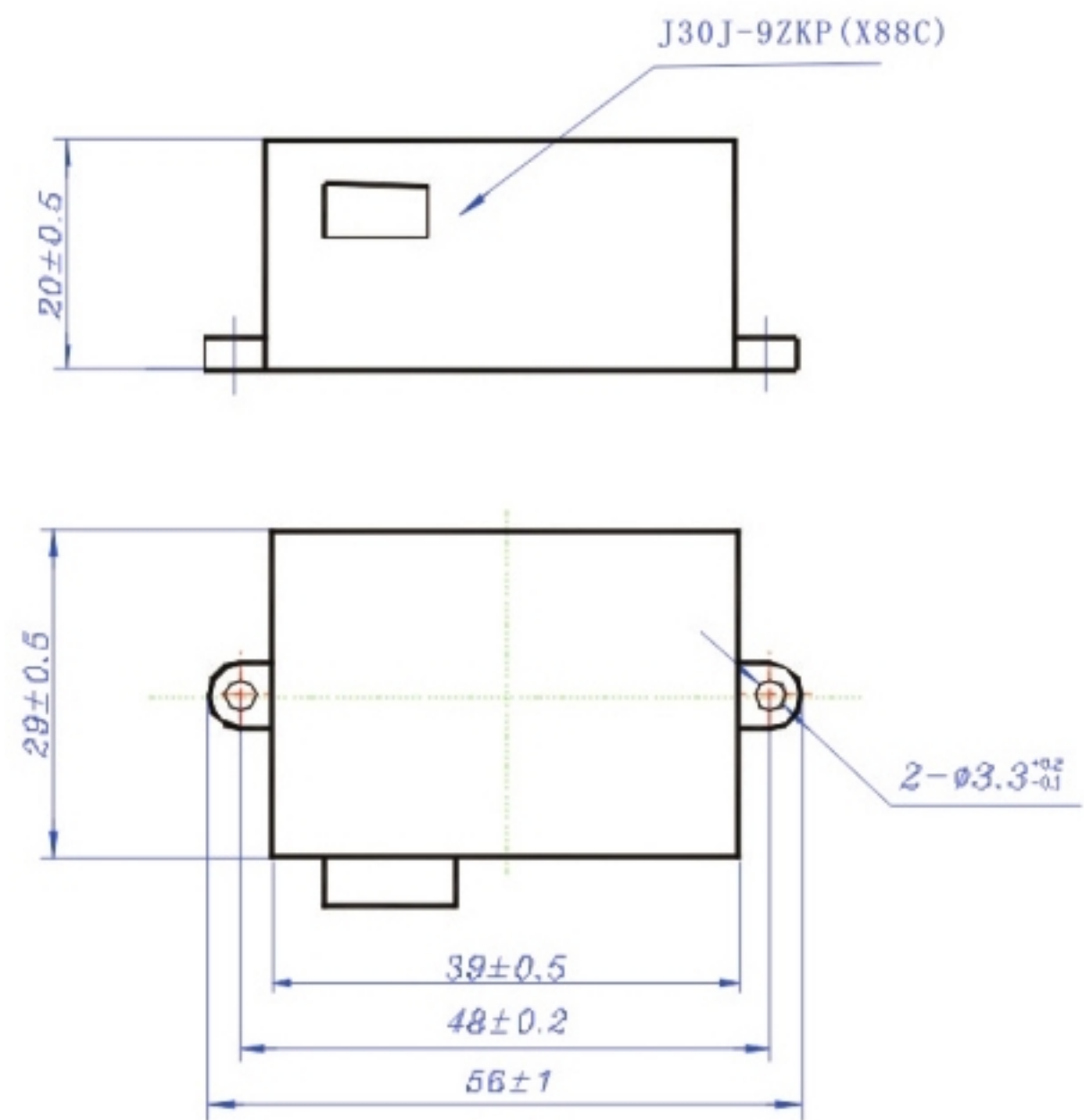
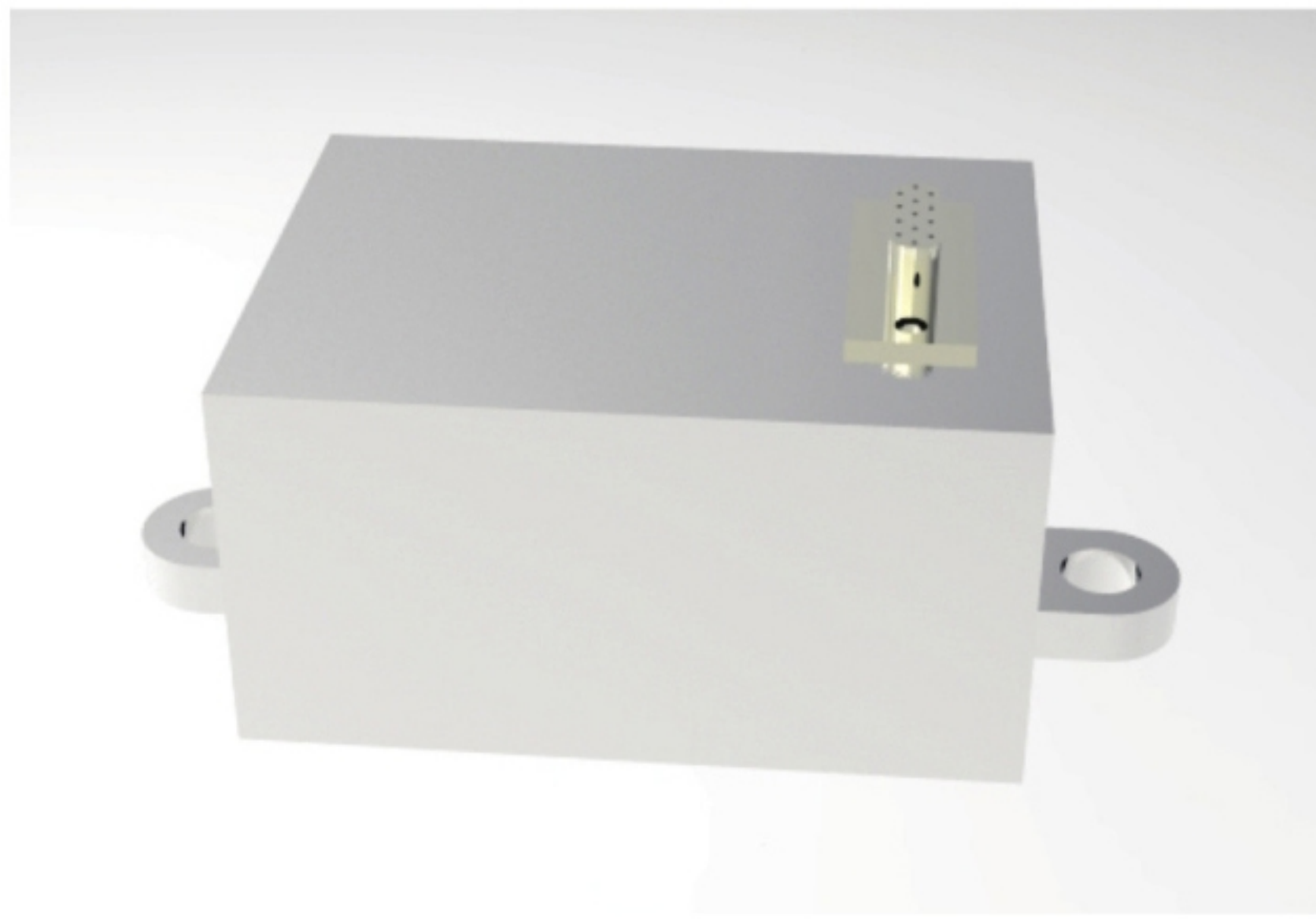


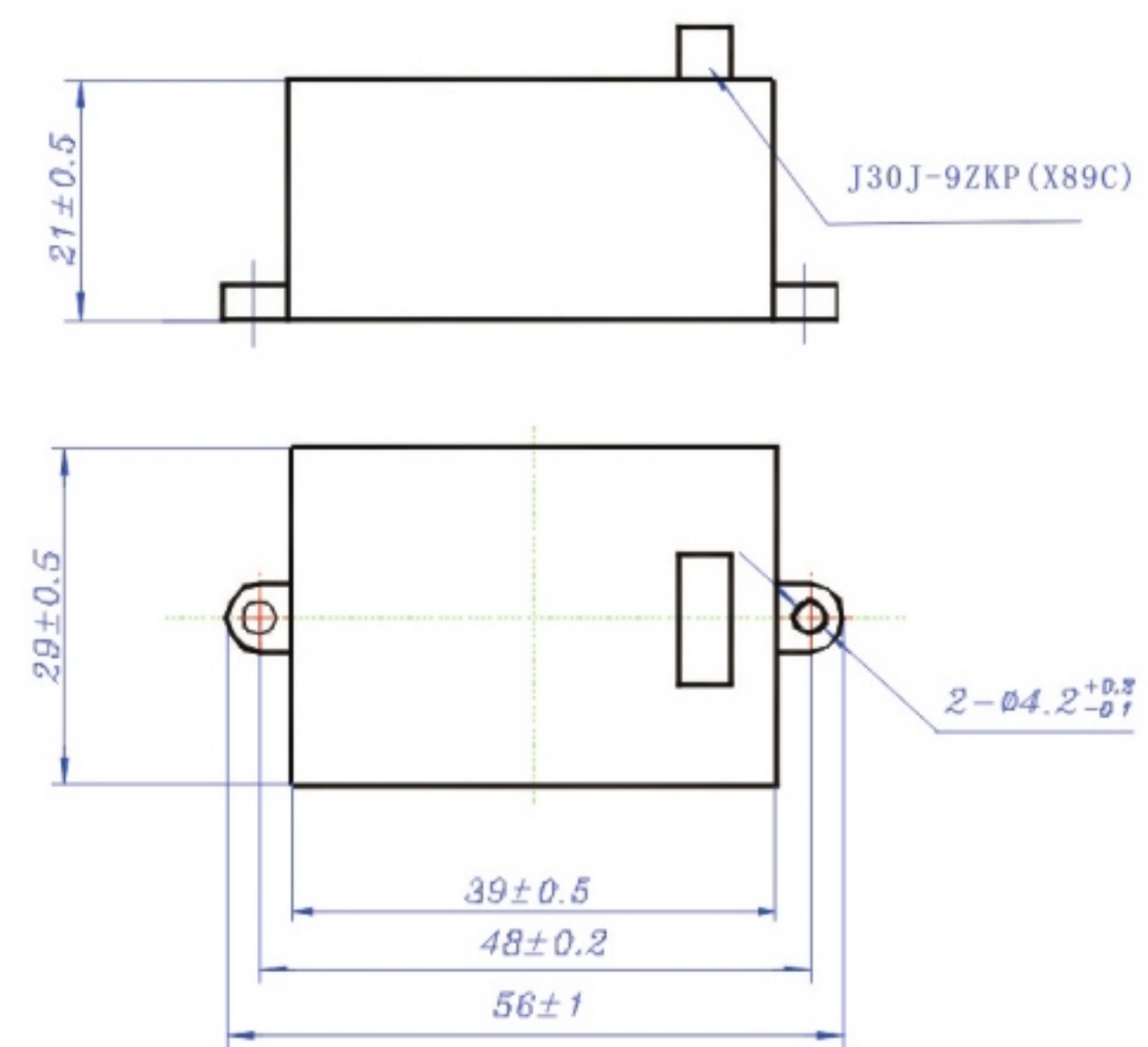
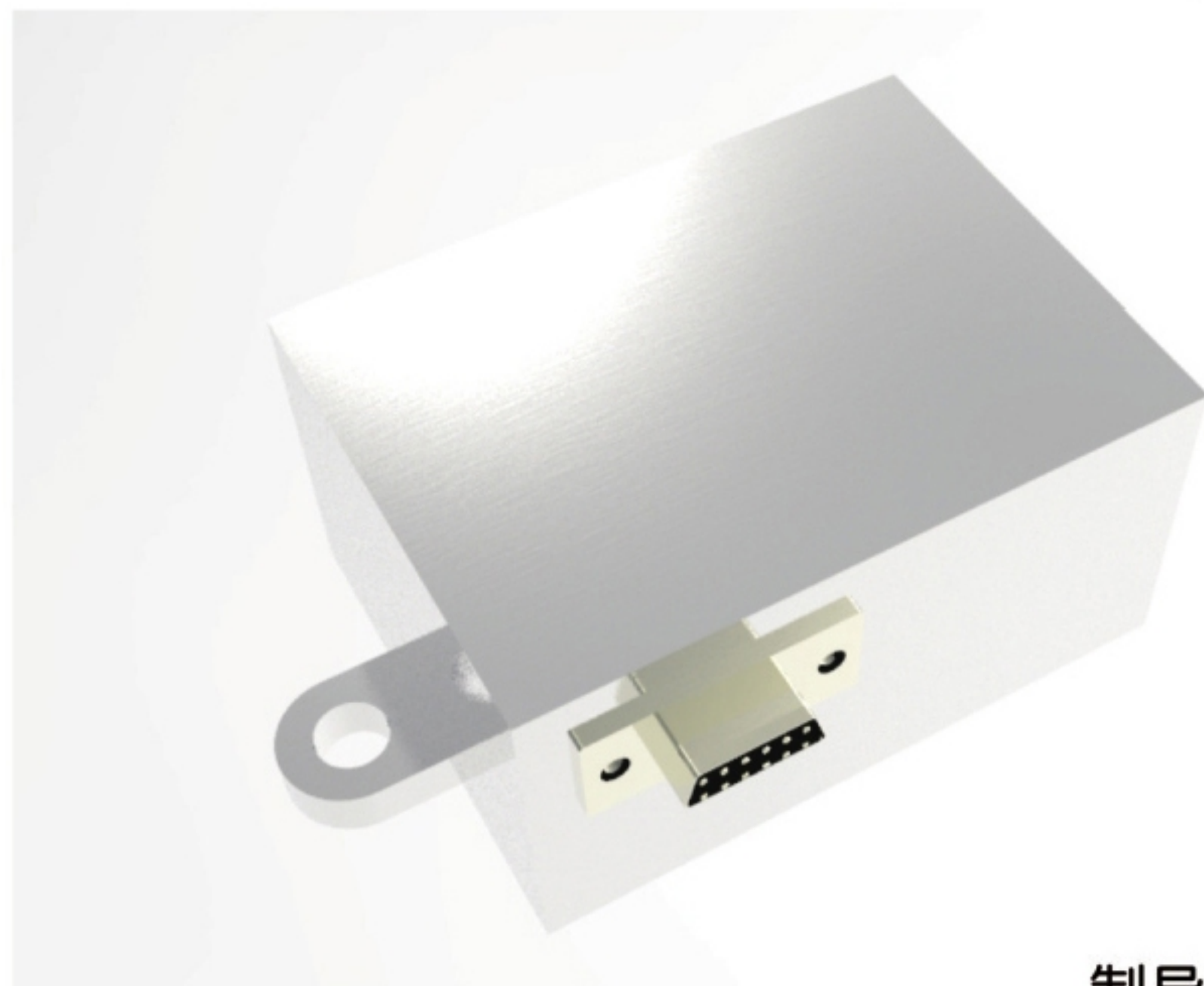
CWJ-074型小型温度传感器

CWJ-074 emperature Sensor WBJ-073Temperature Converter

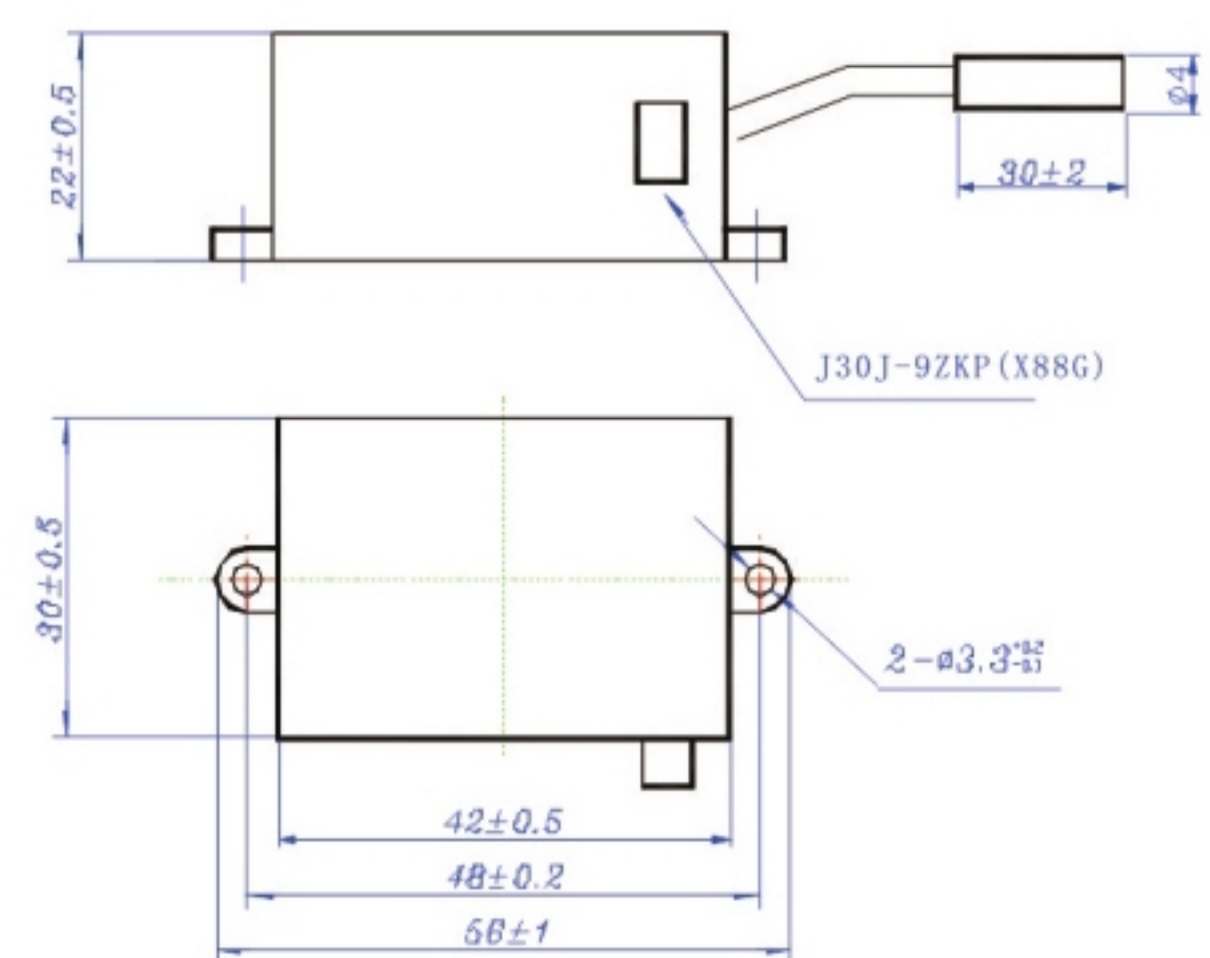
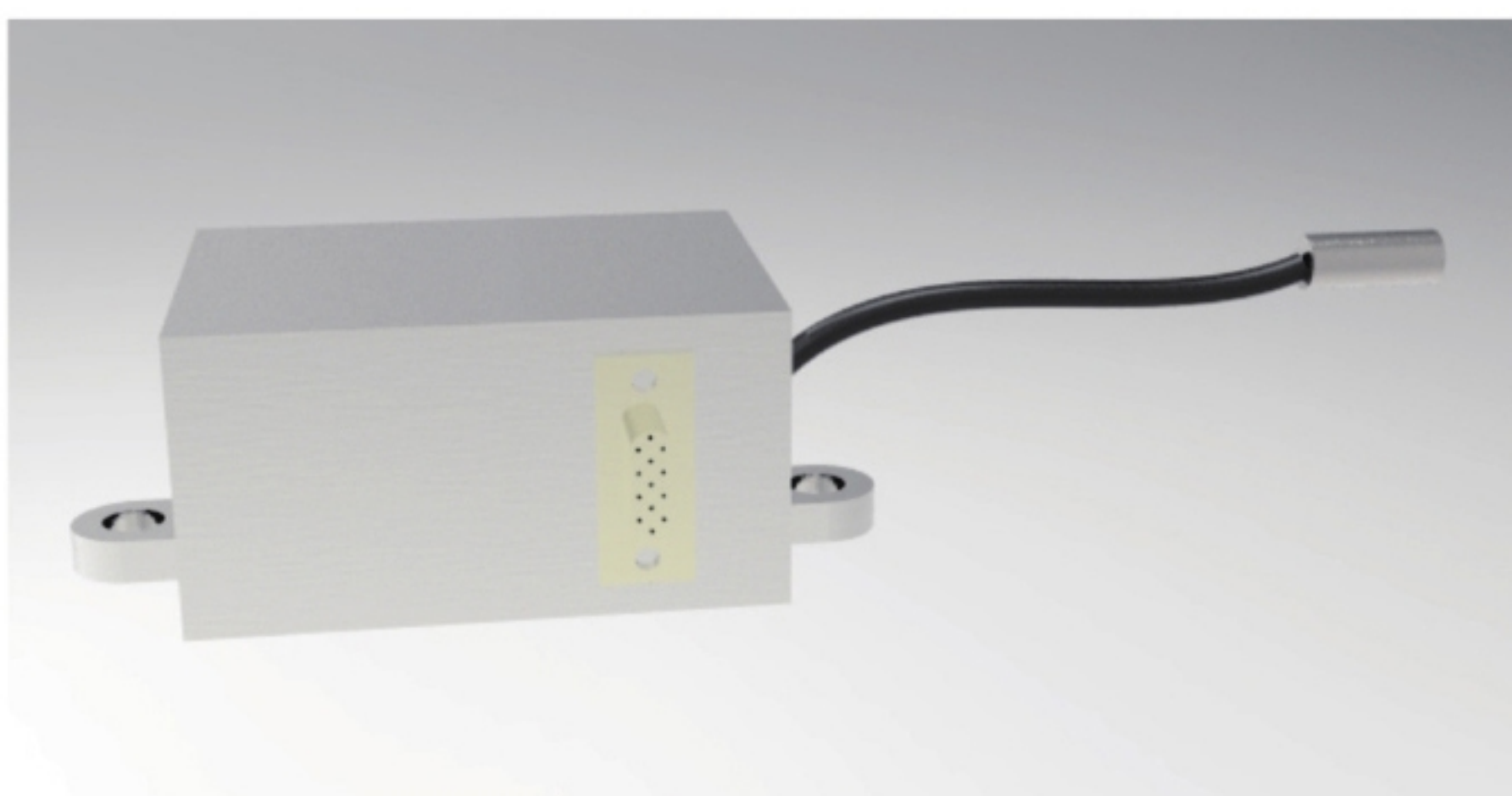
1.外形结构尺寸 Overall dimension



仪器舱传感器外形图
outside drawing of instrument cabin sensor



制导舱传感器外形图
outside drawing of guided cabin sensor



动力舱传感器外形图
outside drawing of power cabin sensor

2. 电气连接 Electrical connection

传感器的电气连接方式采用J30JZKP电连接器，接点功能见下表。

Electrical connection of sensor is connector J30JZKP, please check contact Function in table.

接点 Contact	1	2	3	4	5	6	7	8	9
功能 Function	+12V	-12V	信号输出 Signal output	信号输出 Signal output	电源地 Power earthing	信号地 Signal earthing	屏蔽地 Shield earthing	空 Null	空 Null

3. 主要技术指标

main technical parameters

名称 Name	小型温度传感器 Mini-temperature sensor	
型号 Model	CWJ-DZ-4006型	
性能特性 Performance characteristics	测量范围 Temperature Range	a) -50℃ ~ 70℃; (制导舱、仪器舱) b) -100℃ ~ 200℃; (动力舱) c) 根据用户要求。 a) -50℃ ~ 70℃; (Guided cabin, instrument cabin) b) -100℃ ~ 200℃; (power cabin) c) customized.
	工作温度 Working Temperature	-30℃ ~ 60℃ (制导舱、仪器舱) -120℃ ~ 100℃ (动力舱), 工作时间不大于120s -30℃ ~ 60℃ (Guided cabin, instrument cabin) -120℃ ~ 100℃ (power cabin), working temperature MAX.120s
	激励电源 Excitation power supply	(± 12 ± 1) VDC
	重量 Weight	≤ 0.040kg (-50℃ ~ 70℃) ≤ 0.055kg (-100℃ ~ 200℃)
	外形尺寸 Outline Dimension	-
电气特性 Electrical characteristics	绝缘电阻 Insulation resistance	≥ 100MΩ (50 ± 10%VDC时)
	输出阻抗 Output impedance	-
静态特性 Static characteristics	零位输出 Zero output	-
	满量程输出 Full range output	-
	非线性 Nonlinearity	-
	重复性 Repeatability	-
	迟滞 Delaying	-
	准确度 Accuracy	-
	过载 Overload	-
稳定性 Stability	零点漂移 Zero drift	-
	热零点漂移 Thermal Zero drift	-